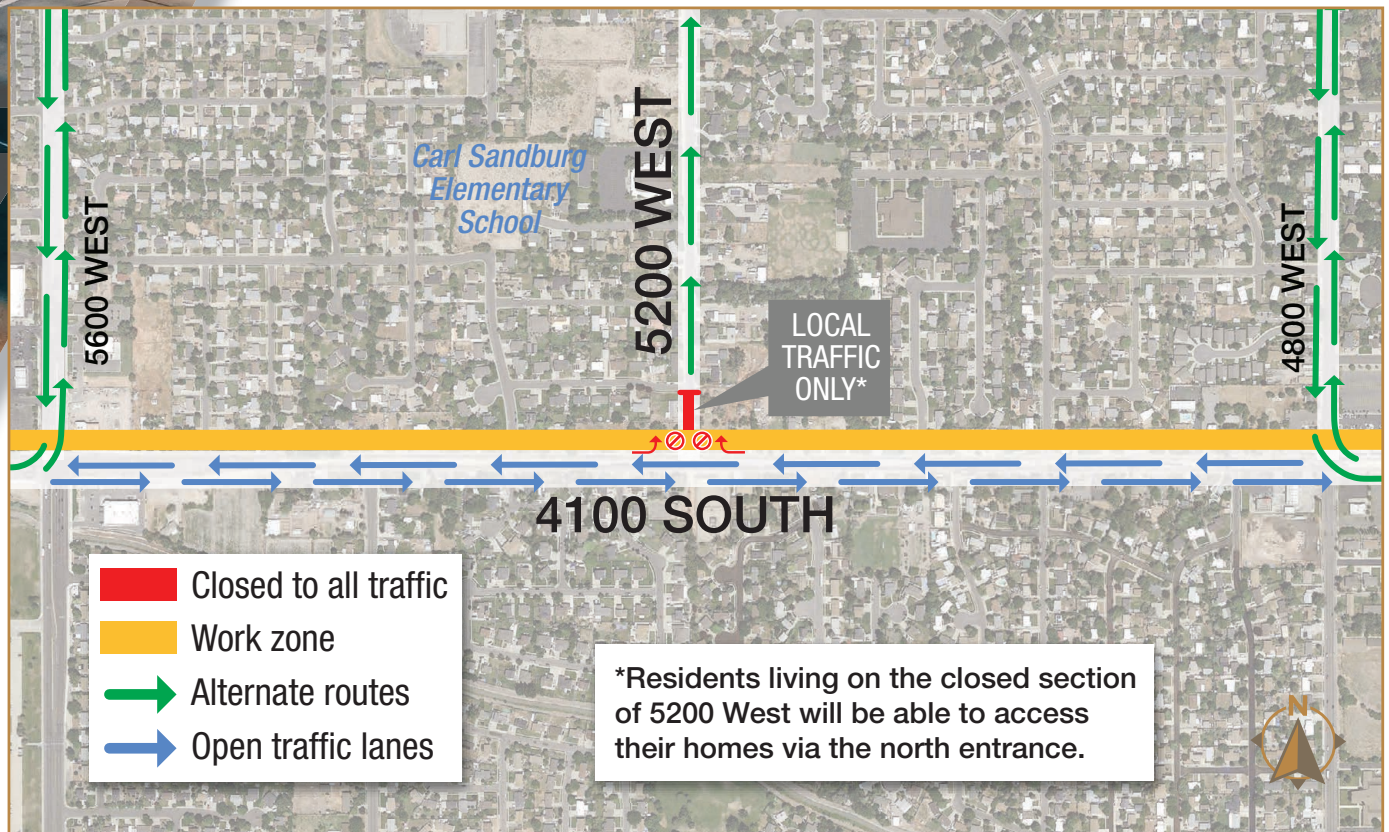


4100 SOUTH RECONSTRUCTION

BANGERTE HIGHWAY TO 5460 WEST

5200 WEST INTERSECTION CLOSED TO NORTH/SOUTH TRAFFIC

Crews will be closing the north leg of the 5200 West intersection starting **Saturday, Nov. 9 - Saturday, Nov. 23.** Drivers are encouraged to use 5600 West and 4800 West as alternate routes. See the detour map below for more information



CONTACT US:

Website: www.4100SouthWVC.com

Email: info@4100SouthWVC.com

Hotline: 801-872-3941

*Contáctenos también
si necesita esta
información en
Español.*